


FIELDPILOT®

USER MANUAL

Installation Manual for Vehicle Kit Number 91-02700

Fits only Case MX Magnum Series Tractors
with factory steering valve



A Subsidiary of  Spraying Systems Co.®

FIELDPILOT®

Copyrights

© 2010 TeeJet Technologies. All rights reserved. No part of this document or the computer programs described in it may be reproduced, copied, photocopied, translated, or reduced in any form or by any means, electronic or machine readable, recording or otherwise, without prior written consent from TeeJet Technologies.

Trademarks

Unless otherwise noted, all other brand or product names are trademarks or registered trademarks of their respective companies or organizations.

Limitation of Liability

TEEJET TECHNOLOGIES PROVIDES THIS MATERIAL "AS IS" WITHOUT WARRANTY OF ANY KIND, EITHER EXPRESSED OR IMPLIED. NO COPYRIGHT LIABILITY OR PATENT IS ASSUMED. IN NO EVENT SHALL TEEJET TECHNOLOGIES BE LIABLE FOR ANY LOSS OF BUSINESS, LOSS OF PROFIT, LOSS OF USE OR DATA, INTERRUPTION OF BUSINESS, OR FOR INDIRECT, SPECIAL, INCIDENTAL, OR CONSEQUENTIAL DAMAGES OF ANY KIND, EVEN IF TEEJET TECHNOLOGIES HAS BEEN ADVISED OF SUCH DAMAGES ARISING FROM TEEJET TECHNOLOGIES SOFTWARE.


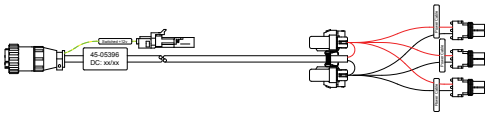
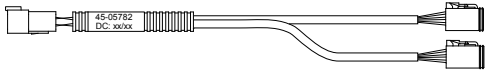
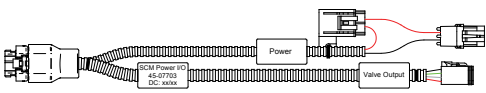
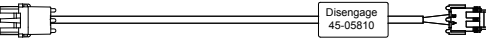


WARNING: PINCH POINT HAZARD! To prevent serious injury or death, avoid unsafe practice while manually operating hydraulic steering circuits. Keep others away and stay clear of mechanical steering linkages.

KIT CONTENTS

Unpack the installation kit and identify the required parts.

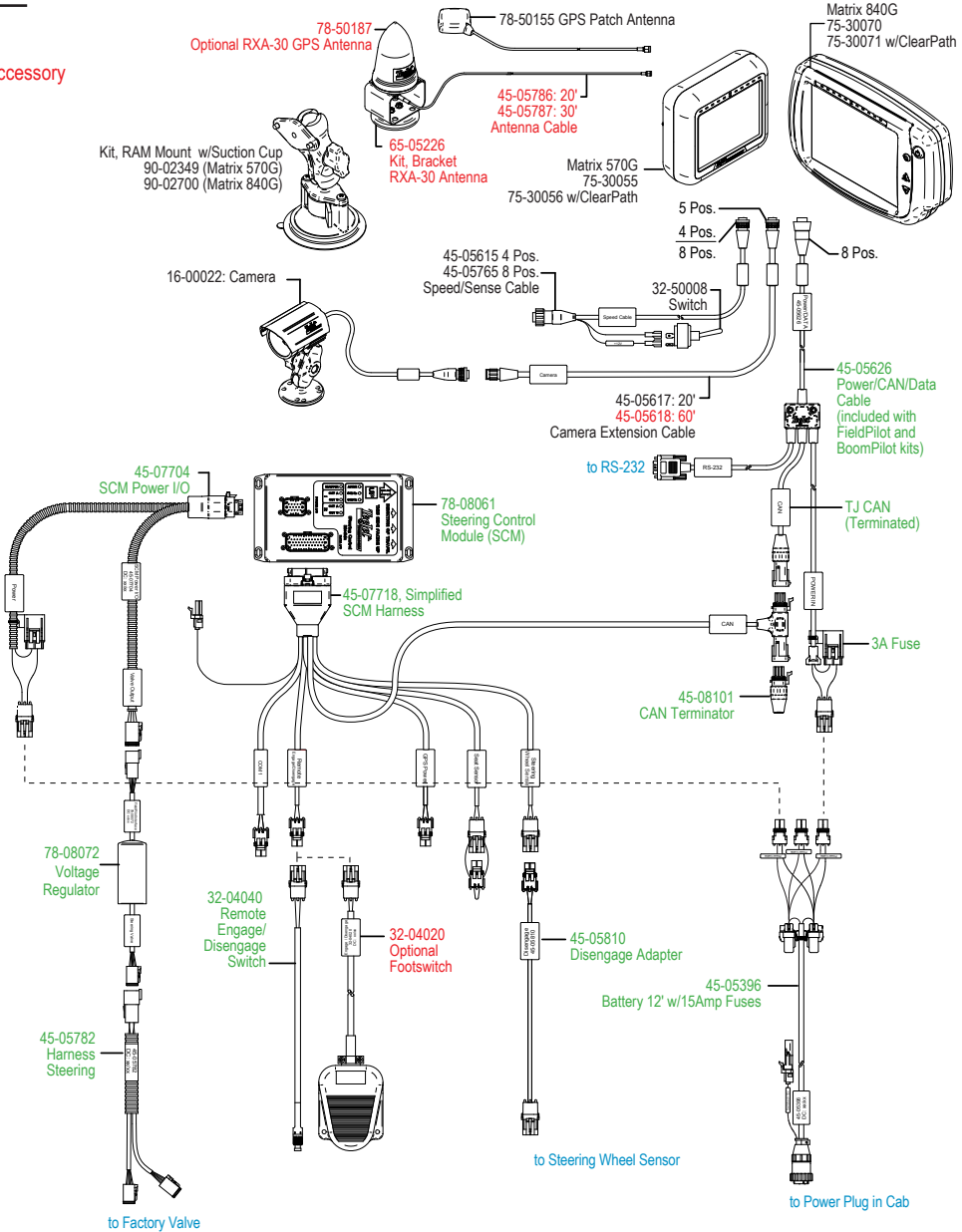
Item	Part Number	Description	Quantity
A	32-04040	Switch, Engage/Disengage.....	1
B	45-05396	Power Cable, Cab Access	1
C	45-05626	Cable, Main Matrix Console.....	1
D	45-05782	Cable, Trimble AS Valve	1
E	45-05810	Cable, Adapter, 3 Position AMP to 2 Position WP	1
F	45-07704	Cable, SCM, Trimble Autosteer Valve.....	1
G	45-07718	Harness, SCM, Simplified.....	1
H	45-08101	Terminator, CAN Male, WP.....	1
I	78-08061	Steering Control Module, FieldPilot IV.....	1
J	78-08072	Voltage Regulator	1
K	90-50013	Cable Tie Kit, 15	1
L	91-07011	Steering Wheel Switch Kit	1
M	98-05225	Installation Manual Case MX w/Factory Valve.....	1

Item	Part #	Description	Illustration
A	32-04040	Switch, Engage/Disengage	
B	45-05396	Power Cable, Cab Access	
C	45-05782	Cable, Trimble AS Valve	
D	45-07704	Cable, SCM, Trimble Autosteer Valve	
E	45-05810	Cable, Adapter, 3 Position AMP to 2 Position WP	

Item	Part #	Description	Illustration
F	45-07704	Cable, SCM, Trimble Autosteer Valve	
G	45-07718	Harness, SCM, Simplified	
H	45-08101	Terminator, CAN Male, WP	
I	78-08061	Steering Control Module, FieldPilot IV	
J	78-08072	Voltage Regulator	
K	90-50013	Cable Tie Kit, 15	
L	91-07011	Steering Wheel Switch Kit	
M	98-05225	Installation Manual Case MX w/Factory Valve	

Figure 1-1:

Matrix
FieldPilot
Optional Accessory



INSTALLATION



If there are questions concerning the installation of the FieldPilot system on this vehicle, or due to the changes in component specifications the parts supplied in the kit are not exactly as presented in this document, please contact your dealer or TeeJet Customer service representative for clarification before installation. TeeJet Technologies is not responsible for misuse or incorrect installation of the system.

NOTE: BE VERY CAREFUL TO ABSOLUTELY SECURE ALL CABLES AND HOSES SO THAT THEY DON'T INTERFERE WITH THE MANY MOVING PARTS OF THE MACHINE!

1. RECOMMENDED ELECTRONICS INSTALLATION

The Steering Control Module (SCM) **(I)** should be mounted securely to the floor of the cab. Once the SCM is securely mounted, connect it to harnesses **(F&G)**. Then connect interface **(J)** to harness **(F)**. The control console can be mounted to the operator's preference. The GPS antenna should be mounted as far forward as possible on top of the cab on a metal surface of at least 4" square.

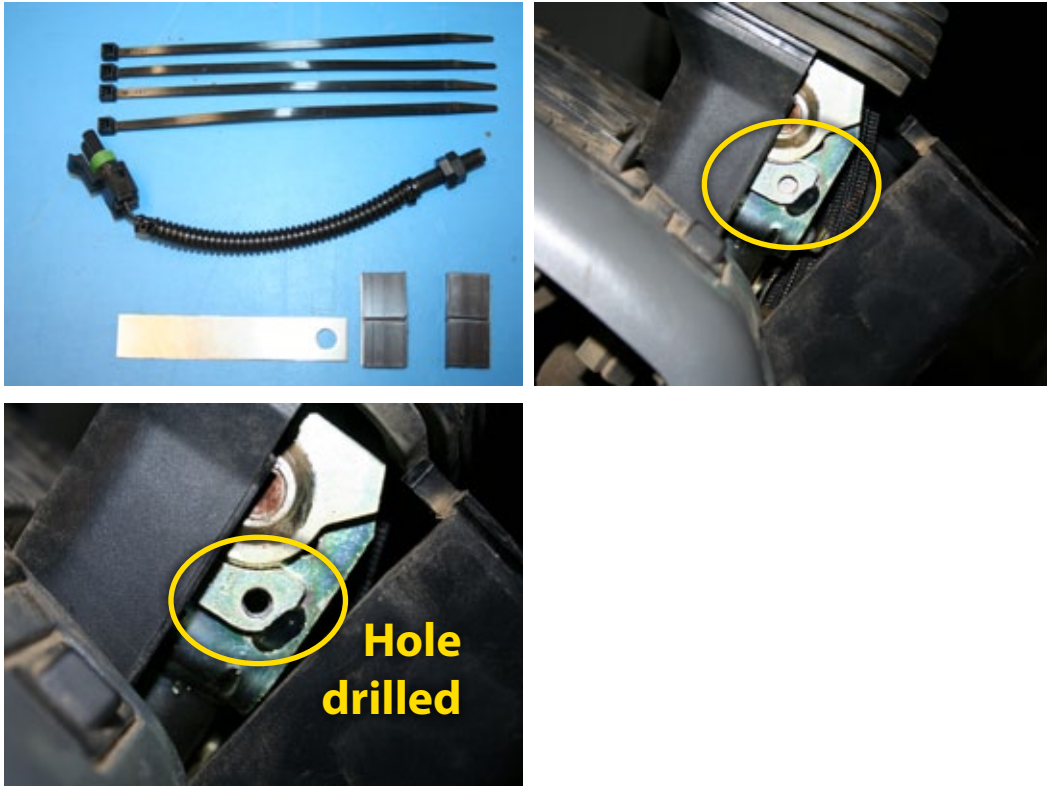
Figure 1-2: Recommended Electronics Installation



2. INSTALL STEERING DISENGAGE SWITCH (KIT 91-07011)

The steering disengage kit (L) is used to automatically disengage FieldPilot when the steering wheel is turned. The magnets mount on the steering shaft or other rotating part of the steering wheel and the sensor mounts so that there is a 1/8" clearance between the sensor and magnet. One option is to remove the cowling around the steering column. Drill a hole as indicated and mount the sensor inside the cowling. Usually three or four magnets are adequate.

Figure 1-3: Install Steering Disengage Switch (Kit 91-07011)



3. INSTALLATION OF ENGAGE/DISENGAGE SWITCH

Connect item **(A)** to the connector on the SCM harness labeled Remote Engage/Disengage. Install the push button in a location that is easily accessible during operation of the machine. This switch **(A)** is not required if the optional foot switch 32-04020 is used.

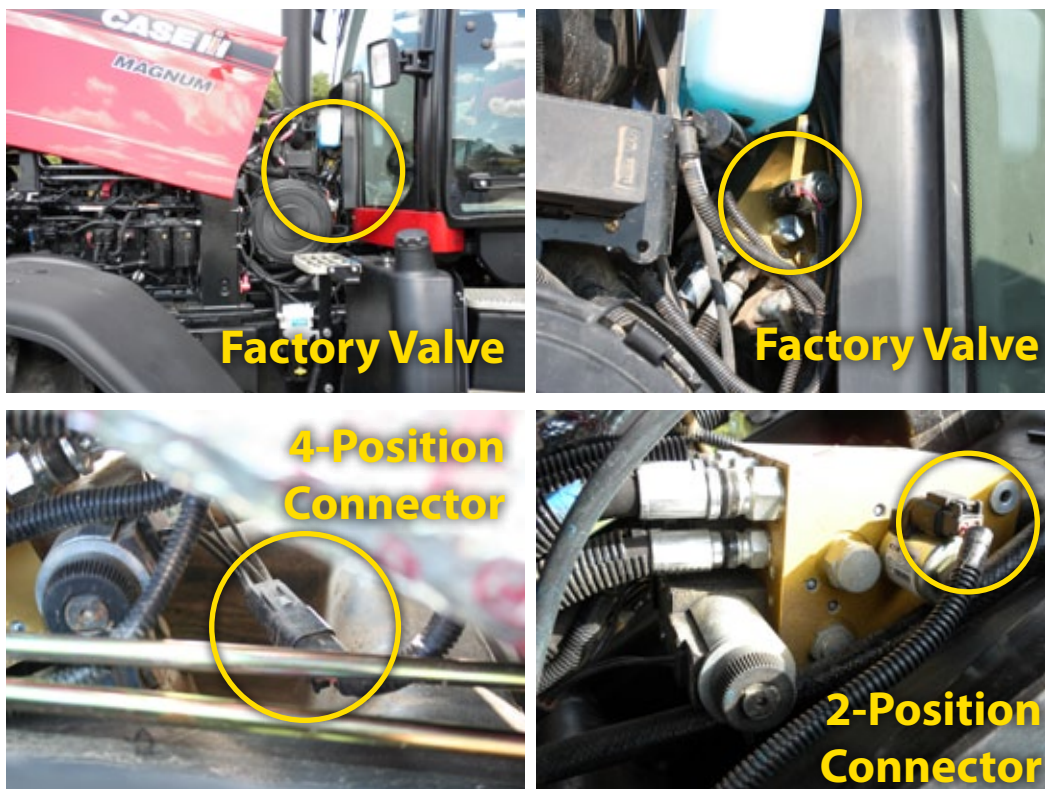
Figure 1-4: Engage/Disengage Switch



4. INSTALL VALVE CONTROL CABLE

Locate the factory installed valve. There should be one or two cables already plugged into the valve connectors. Disconnect them and install the dust caps supplied with cable (D), and then connect cable (D) to the factory installed valve. Some factory valves will not require the use of both connectors.

Figure 1-5: Install Valve Control Cable



5. SPECIFIC CONSOLE SETTINGS

The target lock to lock time is **5 seconds** which is accomplished by adjusting the Maximum Duty Cycle setting in the Matrix console.

The Valve Frequency is **110 Hz**

Adjust as needed the other FieldPilot settings in the Matrix console to obtain the best performance.


FIELDPILOT®

USER MANUAL

A series of equipment-specific hydraulic installation kits have been developed to work in conjunction with your assisted steering system. This kit contains the necessary components and instructions to install assisted steering on the Case MX Magnum Series Tractors. Please review this manual thoroughly before beginning the installation process.



1801 Business Park Drive
Springfield, Illinois 62703 USA
Tel: (217) 747-0235 • Fax: (217) 753-8426
www.teejet.com

A Subsidiary of  *Spraying Systems Co.*®

98-05225 R1
© TeeJet Technologies 2010