

# MATRIX® PRO GUIDANCE

LIKE YOU'VE NEVER SEEN BEFORE





# REALVIEW™ GUIDANCE OVER VIDEO A TEEJET EXCLUSIVE



**MATRIX® PRO 840G**



## RealView Guidance Over Video – A TeeJet Exclusive!

Now you can have all the guidance information you need, watch what's ahead and monitor various implement operations on a single console.

## NextRow – Another TeeJet Exclusive

Finding the rows for your next pass just got easier. Matrix Pro's exclusive NextRow feature will guide you through headland turns.

### Matrix Pro features also include:

- Upgrade applications for FieldPilot® Auto Steering, BoomPilot® ABSC and Tilt Compensation
- Create, save and recall boundaries and AB lines
- Two-way data transfer
- Internal WAAS/EGNOS receiver
- Upgrade compatibility to external receivers like RTK or Omnistar
- Create permanent no spray zones
- Video input for up to 8 cameras with optional RealView hardware
- Matrix Pro is available with either an 21.3 cm (8.4") or 14.5 cm (5.7") bright colour touch screen



**MATRIX® PRO 570G**



**RealView Camera**



REALVIEW GUIDANCE OVER VIDEO



BE AWARE OF MORE BY SPLITTING THE SCREEN TO FOUR CAMERAS



VIDEO CAN BE TURNED OFF AT ANY TIME



REALVIEW CAMERAS CAN BE EASILY MOUNTED ANYWHERE

## Faster Payback Than Other Guidance Systems

Guidance products pay for themselves by reducing skips and overlaps – saving you money on fuel, seed and crop protection products. Matrix Pro is no exception. But with Matrix Pro, you get a system that does more:

- The video display can help relieve stress and fatigue by providing more information at row ends and about hard-to-see implement operations
- Matrix Pro helps save time by storing multiple field boundaries and multiple guidelines for use in future operations. Two-way data transfer allows uploading and downloading of job data, boundaries, no spray zones, AB lines and more
- Matrix Pro is automatic boom section control (ABSC) and auto-steer ready. Enabling these capabilities is fast and easy. Add one or both – the cost to upgrade is very reasonable
- Matrix Pro costs less than other guidance systems that offer fewer features. Factor in the economical ABSC and auto-steer upgrades and Matrix Pro becomes an outstanding value that will pay for itself in no time

## More About Matrix Pro

- The Matrix Pro system can be used with up to eight RealView cameras
- The Matrix Pro 570G console features a 14.5 cm (5.7") touch screen
- Matrix Pro 840G has an 21.3 cm (8.4") touch screen for a 200% increase in viewing area
- Console screens are exceptionally bright and easily viewable in bright daylight conditions
- A+ Azimuth (degree heading) allows identical, parallel, guidelines when operating multiple vehicles in the same field
- Field Finder organizes saved jobs according to your current GPS location
- Easy-to-use PC utility simplifies creating and maintaining client/farm/field/job data

### Accessories:

- Higher-performance RXA 30 GPS antenna for better gain and sensitivity. GPS L1 and GLONASS-compatible
- Compatible with CORS or base station RTK solutions in addition to WAAS/EGNOS and OmniStar® XP/HP
- Tilt Gyro for automatic adjustment in uneven terrain
- Video Selection Modules for use with more than one RealView camera

## Matrix Pro Guidance with Functionality, Performance and Value Like You've Never Seen Before.

RAM is a registered trademark of RAM Mount.



RXA-30 ANTENNA



RTK BASE STATION

# SMALL ADDITIONAL INVESTMENTS YIELD BIG BENEFITS

## Add FieldPilot® Auto Steer and Increase Productivity while Decreasing Fatigue and Input Costs

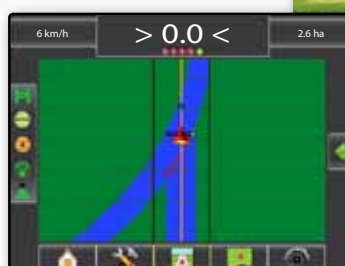
- Matrix Pro can be upgraded with FieldPilot auto steering. You can take advantage of RealView cameras to monitor implement operations while FieldPilot handles the steering. Regardless of field operation, your attention can be focused there instead of keeping the machine on-line
- Smooth PWM hydraulic steering
- Works with your tractor or sprayer – installation kits available for more than 300 different tractors and other machines



HANDS-FREE STEERING

## Save 5% to 15% on Input Costs by Eliminating Overlaps with BoomPilot® Automatic Boom Section Control

- Robust and proven system uses GPS to record the location of applied areas in your field and automatically turns boom sections on and off to prevent wasteful re-application
- Supports up to 15 boom or planter sections
- Individual section status and coverage is displayed on guidance page



AUTOMATIC BOOM SECTION CONTROL

# Graphical, Easy-to-Use, 3D Guidance

## PERSPECTIVE-VIEW GUIDANCE

Navigation activity including Cross Track Error, Current Activity, and GPS Status

Compass Headings on Horizon

Adjacent Guidelines

Continuous Visibility of Status Bar

Overlapped areas are clearly visible

Active Guideline

Selectable Job Information including Current Speed, Accumulated Area, Current Time, Swath Number and Heading

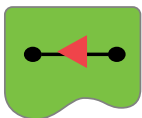
On Screen On/Off Boom Section Status

Accurate Boom Section Representation

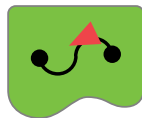
"Painted" Coverage Area

One Touch Access to All Guidance Views

## GUIDANCE MODES



Straight



Curved



Circle Pivot



Last Pass



Next Row

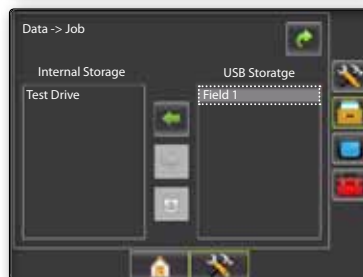
Matrix Pro's unique NextRow feature guides operators through turns in row crop environments, helping them find the correct rows to steer between for the next pass.

## MAPPING AND COVERAGE DATA COLLECTION

On-screen field review to see coverage gaps/skips



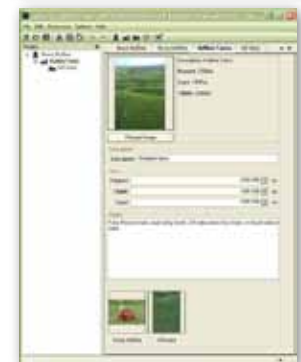
Upload and download job data, boundaries, no spray zones, AB lines and more



Data export through SHP files, PDF reports and KML-compatible Google Earth files with satellite image background



Easy-to-use PC utility simplifies creating/maintaining client/farm/field/job data



TeeJet Technologies  
 Mølhavevej 2  
 DK 9440 Aabybro, Denmark  
 Tel: +45 96 96 25 00 • Fax: +45 96 96 25 01  
[teejetguidance.com](http://teejetguidance.com)